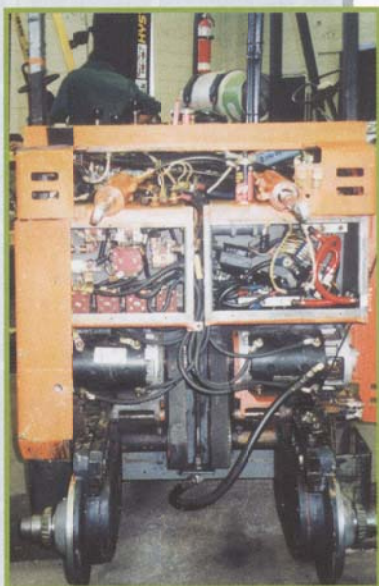


What is a Rebuilt Halton **Lift** Truck



New Truck Warranty!

Halton **Lift** Truck

▲ 905-858-3460 ▲ www.halton-lift.com

Halton ^{Lift} Truck's are stripped and components returned to 80% of New Condition

- Engine Block
- Cylinder Head(s)
- Starter and Alternator
- Carburetor
- Fuel System
- Belts and Pullies



- Mast Channels
- Mast Rollers or Sliders
- Lift Chains
- Hydraulic Packings
- Cylinder Chrome
- Hydraulic Valves
- Hydraulic Hoses



- Transmission
- Clutch and Pressure Plate
- Clutch Packs
- Torque Converter
- Control Valve
- Transmission Linkage

- Motor Armature(s)
- Motor Brushes
- Commutators
- S.C.R. Control Panel
- Contractor Assemblies
- Contractor Tips
- Electrical Wiring
- Switches



- Differential
- Drive Axles
- Wheel Bearings
- Steering King Pins
- Steering Linkage
- Steering Box
- Tie Rods



- Brake Shoes or Pads
- Brake Discs or Drums
- Master Cylinder
- Emergency Brake
- Dead-Man Brake
- Wheels and Tires
- Paint